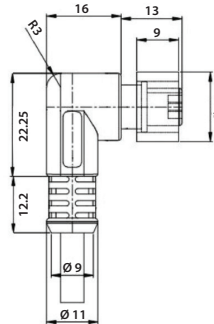
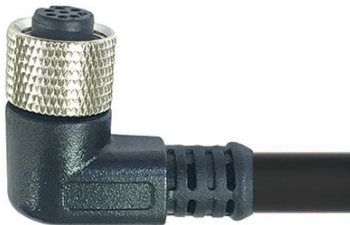
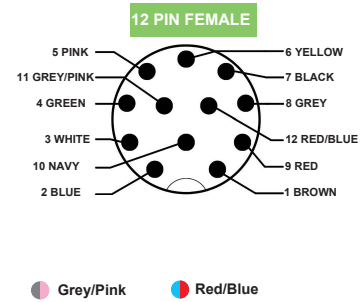


# ERF12-FA12D-30BPVC

M12 Female, 90° Angled, 12 Pin, PVC,  
30 Meters, 12x0,14 mm<sup>2</sup>



- White
- Brown
- Green
- Yellow
- Grey
- Pink
- Blue
- Red
- Black
- Navy



### Technical Data

Standard	IEC 61076	Contact Carriers Material	PU / PA
Series	M12, Female, Angled	Contact Material	Copper Alloy, Gold-Plated
Number of Pins	12 Pin	Metal of Nut	Copper Alloy with Nickel Plated
Rated Current	2A max.	Seal	Silicone
Rated Voltage	60V max.	Cable Jacket Material	PVC
Insulation Resistance	≥100MΩ	Color	Optional
Contact Resistance	≤ -5mΩ	Shielding	Optional
Ambient Temperature	-25 ~ +75°C	Mechanical Life	> 100 Mating Cycles
IP Class	IP67	—	—

ARTICLE NO	TYPE	ANGLE	PIN	CABLE LENGTH	COLOR	CABLE TYPE	CABLE SECTION
ERF12-FA12D-30BPVC	F - FEMALE	A - ANGLED	12 PIN	30 METERS	BLACK	PVC	12 x 0,14 mm <sup>2</sup>