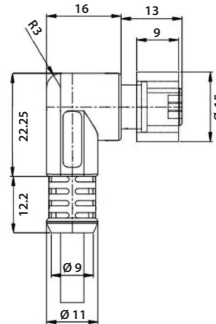
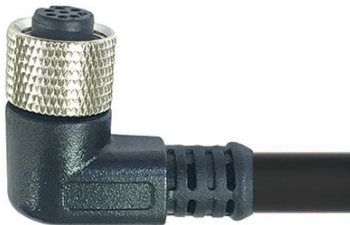
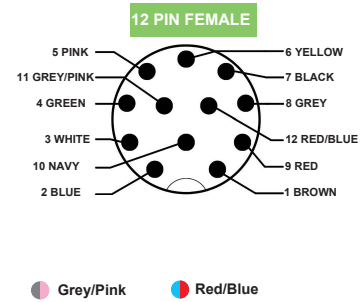


# ERF12-FA12D-10BPVC

M12 Female, 90° Angled, 12 Pin, PVC,  
10 Meters, 12x0,14 mm<sup>2</sup>



- White
- Brown
- Green
- Yellow
- Grey
- Pink
- Blue
- Red
- Black
- Navy



### Technical Data

|                       |                     |                           |                                 |
|-----------------------|---------------------|---------------------------|---------------------------------|
| Standard              | IEC 61076           | Contact Carriers Material | PU / PA                         |
| Series                | M12, Female, Angled | Contact Material          | Copper Alloy, Gold-Plated       |
| Number of Pins        | 12 Pin              | Metal of Nut              | Copper Alloy with Nickel Plated |
| Rated Current         | 2A max.             | Seal                      | Silicone                        |
| Rated Voltage         | 60V max.            | Cable Jacket Material     | PVC                             |
| Insulation Resistance | ≥100MΩ              | Color                     | Optional                        |
| Contact Resistance    | ≤ -5mΩ              | Shielding                 | Optional                        |
| Ambient Temperature   | -25 ~ +75°C         | Mechanical Life           | > 100 Mating Cycles             |
| IP Class              | IP67                | —                         | —                               |

| ARTICLE NO         | TYPE       | ANGLE      | PIN    | CABLE LENGTH | COLOR | CABLE TYPE | CABLE SECTION             |
|--------------------|------------|------------|--------|--------------|-------|------------|---------------------------|
| ERF12-FA12D-10BPVC | F - FEMALE | A - ANGLED | 12 PIN | 10 METERS    | BLACK | PVC        | 12 x 0,14 mm <sup>2</sup> |